

## Introduction

Made in Italy kitchens distributes in Australia the products of CucineLube, the number one manufacturer in Italy, a leader in cabinetry design and technology. From a Country with centuries of experience as artisans, craftsman and designers, where manufacturing technology and industrial machinery is one of the largest exports, these products offer significant advantages.

- Environmentally friendly cabinetry, due to compliance with the lowest emission rating obtainable (less than 0.3mg/L, meeting "Japanese F-4 Star" standards, as well as the Green Guard Gold requirements), utilisation of recycled materials in a totally solar powered factory, and all emissions resulting from transport are overcompensated for by planting forestry trees.
- A vast range of styles, materials and finishes in both the latest European styles and trends, as well as classic styles.
- A highly sophisticated and technologically advanced production environment focused at producing high quality to price ratios, enabling competitive prices and the benefit of added quality at no extra cost.
- A reasonable lead time of around 14 weeks for a complete, assembled kitchen.
- An increased return on investment - at the heart of the house, the kitchen is a highly noticeable feature and the quality of which considerably influences a property's value and success in real estate marketing campaigns.
- The assurance of quality & durability due to adherence with high standards applied to the European manufacturing industry; with thicker structures, precision assembly, Blum hinging and sophisticated application.
- An additional optional and complimentary specialist kitchen design service to identify optimum functionality, aesthetics and cost effective solutions.

167 Moray Street, South Melbourne Vic 3205  
(03) 90423815  
[carlo@madeinitalykitchens.com](mailto:carlo@madeinitalykitchens.com)  
[www.madeinitalykitchens.com](http://www.madeinitalykitchens.com)



## Our Manufacturers



### CucineLube Group is the Number One Kitchen manufacturer in Italy

Established in 1967, the Company quickly became renowned for the quality of its products and its focus on innovation and continued to grow, until reaching the prestigious position which it occupies today - over 350 kitchens are manufactured to precision daily in a hi-tech 100,000 SQM factory powered by a 40.800 SQM solar plant. The Group manages 3 brands specialized in residential joinery, offering the most complete range of finishes and ergonomics solutions for every area of the house.



CucineLube is also the first European Kitchen company to be awarded with the Green Guard Gold Certification, which is the strictest standard for VOC emissions. Such is only the latest credential which certifies the superior quality of CucineLube products and manufacturing process





## Our Brands

madeIn  
Italy  
KITCHENS



made in  
Italy  
KITCHENS

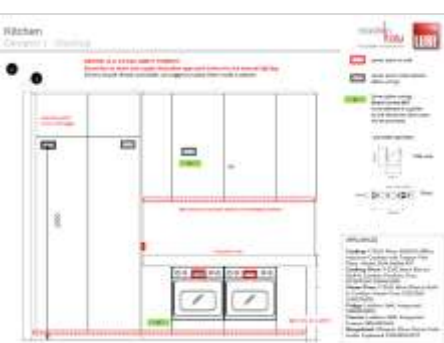
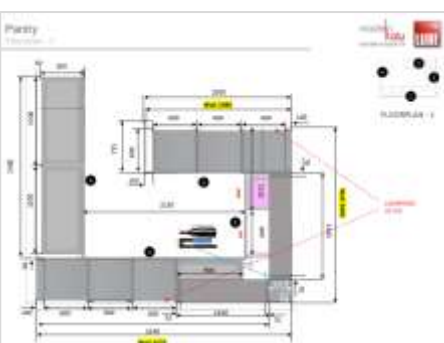
Architectural drawings of a kitchen layout. The top drawing is a side elevation showing a window, cabinets, and a sink area with numbered callouts 1 through 5. The bottom drawing is a plan view showing the layout of the kitchen units, including a sink, hob, and oven, with dimensions and labels A, B, and C. A note specifies "Note - worktops 40 mm".



made in **italy**  
Australian Importer for  
**FAER AMBIENTI**



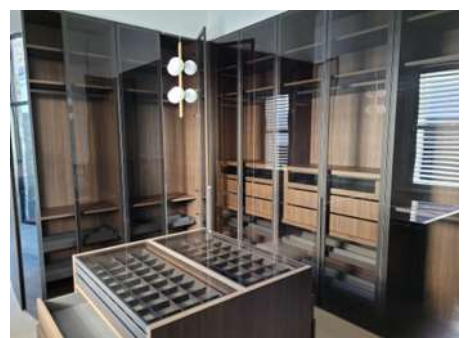
# Our Service



- **FULL ASSISTANCE FROM CONCEPT TO INSTALLATION**
- **1K DIFFERENT FINISHES**
- **30 KITCHEN MODELS**
- **5 OPENING SYSTEM OPTIONS**
- **6 WARDROBES MODELS**
- **SOLUTIONS FOR EVERY AREA (Kitchen, Laundry, WFH, Wardrobes, Living)**
- **EXTENSIVE WARRANTIES**
- **UNIQUE MATERIALS**
- **FLEXIBILITY WITH CUSTOMIZATION**
- **EXCLUSIVE PRODUCTS**



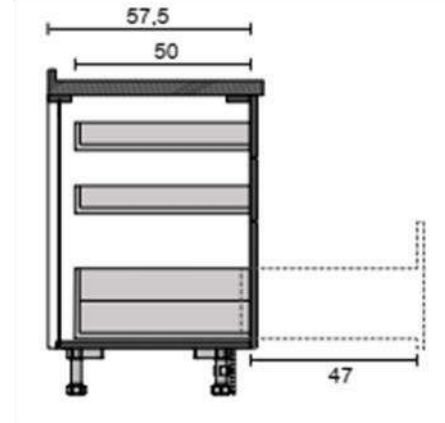
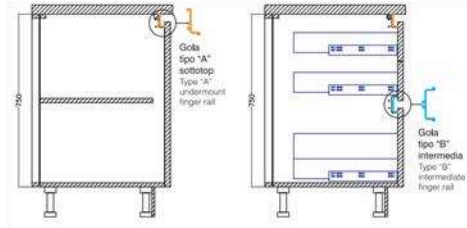
[Click to see some Projects](#)





## Our Quality

madeIn  
Italy  
KITCHENS



BLUM Blumotion  
Soft closing hinges 110 & 155 degrees

BLUM Blumotion – soft closing full extraction drawers -capacity up to 60 Kg  
Recessed back for a better insulation  
Units on adjustable legs - Aluminium finger rails & plinths



## Latest internal equipment

Extensive choice of opening systems



Structure: 18 mm JIS F4\* Laminate - 6 Colours choice

# Our Projects

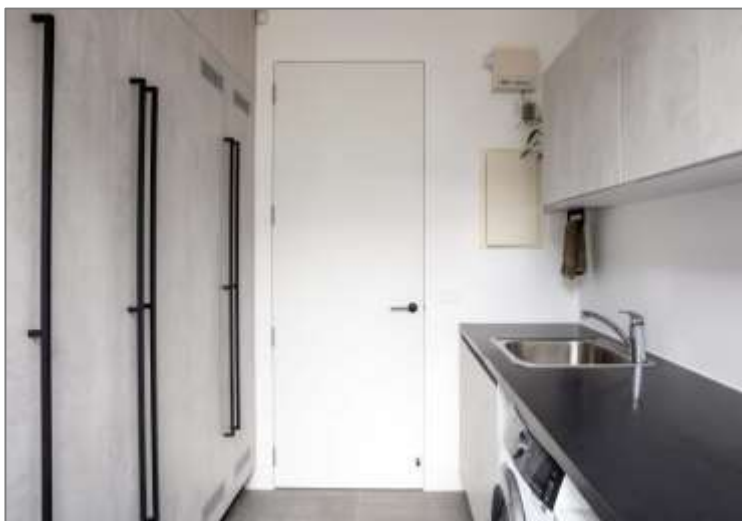
## Camberwell

Italian Timber Veneer Noce Canaletto and Natural Stone achieve a warm and timeless elegance for this large Kitchen & Living. For such a big kitchen, the layout and finishes chosen made it a cozy and comfortable place to cook and entertain



# Camberwell

The project includes Kitchen, Walk-in Pantry, Living, Bathrooms and Study with different configurations and finishes to reach the desired functionality and look





New Build

madeIn  
Italy  
KITCHENS

## Camberwell Townhouses

Functional and modern combination of Matt Glass and Lacquering (dark grey and metal effect) for this modern and stylish handleless kitchen



# Camberwell Townhouses

The project also features Butler's Pantry and Laundry in DPL for all Townhouses



# Renovation

## St. Kilda Road

A customized project with FENIX NTM, Lacquering with Metal effect and Glass, complemented by a system of dimmable lighting in different areas





# St. Kilda Road

The library and working station blends with the kitchen by using the same special Lacquering and frosted glass with internal lighting



# Renovation

## Hampton – Fenix NTM & Mortar

Featuring the unique mortar finishing in old black combined with the nanotechnology laminate known as Fenix, a perfectly tailored, modern design enabled innovative solutions for our customer's specific functional and aesthetic requirements.

The design provides the sensation of a larger space with the aid of decorative panels concealing a structural bulkhead. A visually appealing cabinet conceals appliances with a pocket door mechanism – when open the doors slide into the cabinet remaining hidden. A larger central island with breakfast bar is equipped with drawer units on both sides and downdraft cooktop.

Finishes are the final equation to an enjoyable and beautiful space. The darker colours introduce boldness which blends to perfection with the rest of the house. The island's monolithic impression was achieved by the mortar panels giving a handcrafted look. The back wall is a complete layer of solid matt Fenix. Matt white glass overheads break up the dark colours lighten the overall effect.



*Before & After*



# Hampton



Our customer was delighted with the result. "I wanted a lot, but in the end, we didn't have to compromise, everything fit in perfectly" she said.

"The most valuable thing was working with The Made In Italy Team, developing a sense of trust which enabled me to have the confidence to create something I wanted, even though I'm not a designer myself. They were always open and happy to discuss things and helped me find the solution I wanted."





# Renovation

## Vermont

At first the design we presented was not what the client anticipated, but they decided to look outside the square, and they were so glad they did. We proposed adding interest to the space with a combination of unique features.

White glossy lacquer with grey aluminium finger rail adds a striking look in perfect company to the other darker toned cabinets, splashback and benchtop. Functionality is maximised by a number of interesting aspects. The pantry unit conceals appliances and provides an extendable shelf. The overheads with integrated blackboard above a splashback which provides connection of mobile accessories - a towel holder, tablet holder and shelf.

"It's a beautiful design and we really love it. Everything blends in nicely, for us it's perfect and nice to live with."

"We had already put a lot of work into researching what we wanted in the kitchen, and we really wanted that WOW factor. We presented a challenge, but all the things Made In Italy Kitchens put into the design exceeded our requirements."



Vermont

madeIn  
Italy  
KITCHENS



# New Building

## Bells Beach

For this Bells Beach Country House the laminate finishes of Cement and light white timber were boldly contrasted with the yellow open shelving and bookcase. The homeowners wanted a little splash of colour and the final result was stunning..





# Renovation

## South Melbourne

Kitchen and library with DPL laser cut and Glass on aluminium frame. The handleless kitchen features the most successful and trendy modern finishing, which replicate the concrete and was introduced on 2014 Design Week in Milan, perfectly interpreting the new Design philosophy



# Renovation

## Frankston

The range by Cucine Lube offers a number of interesting veneers; here we see the white aged oak veneer tall units with textured vintage finish. Combined with mortar old black, a magnetic splashback and white glass overheads, it provides an interesting and unique combination effortlessly blending together.



New Build

made in  
Italy  
KITCHENS

Warrandyte – Italian Lacquer with horizontal and vertical  
aluminium finger rails





# Renovation

## Aspendale

Light & Dark Concrete DPL look, White benches and Black finger rails, minimalistic handles & plinths to achieve a modern and elegant look. The stone benchtop allows two different heights of seating, while two open shelving tall units blend the kitchen into the living area



# Renovation

## St. Kilda Road

A bespoke kitchen entirely made by Aluminium & Glass



# Multi Residential Projects

## New Build - Parkdale

Contrasting the darkness of the ultra matt black Fenix with the white finger-proof cabinets was a success in this kitchen. The aluminium finger rail, with especial effect of titanium, breaks smoothly between both colours and allows the design not to have any handles, making it very current with the latest trends in Kitchen design.

The LED lighted and magnetic splashback it's an incredible feature that not only compliments the lighting of the space, but also works as an extension of the bench. The variety of accessories it's playful and enjoyable to the spectator.

The space allowed for the kitchen was not big so a lot of considerations were taken in count to make it as functional as it is beautiful. Extra cabinets are displayed in the front for more storage, but are balanced with a seating area that serves as a breakfast bar. Full-extraction drawers were used for better visibility and reach at the time of cooking; plus a bin pull-out and internal accessories makes the kitchen a more easy-to-use place. The lower kicker, a new contemporary style, allows the cabinets to be larger than usual and the storage space grows with it.







# Multi Residential Projects

## Development – Aspendale

Townhouses build by MAVEN and equipped with Made in Italy Kitchens joinery. Kitchens are from Immagina series, featuring 22 mm DPL doors & panels with a combination of timber and white mortar look, equipped with the exclusive DYNAMIC SPLASHBACK



# Multi Residential Projects

## Development –Aspendale High Quality townhouses

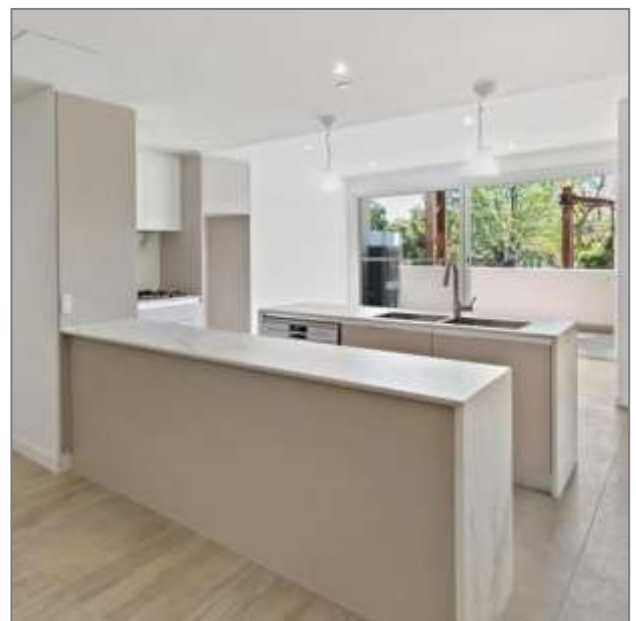




# Multi Residential Projects

## Development - Ivanhoe

Providing to Perin Group cabinetry in a high level 30 apartment development in Ivanhoe; the cabinetry finishing in a combination of white and corda wood grain lacquer in handleless style with integrated handle and aluminium finger rail, complimented by Dekton splashback & benchtop with waterfall.



# Multi Residential Projects

## Development – Surrey Hills

Render for Surrey Hills project comprising 6 apartments, featuring the unique Cemento (Cement) finishing; highly stylish with its warm grey tone and representing the latest trend. The appeal of this textured, velvety finish is enhanced by its iridescent qualities; displaying an appealing variance according to the position of the light source. Another interesting feature of this kitchen is the unique dynamic splashback, where accessories are connected to the surface by magnetic force, and totally movable across the entire surface.



## More Projects

madeIn  
Italy  
KITCHENS



Reservoir



Mornington Peninsula



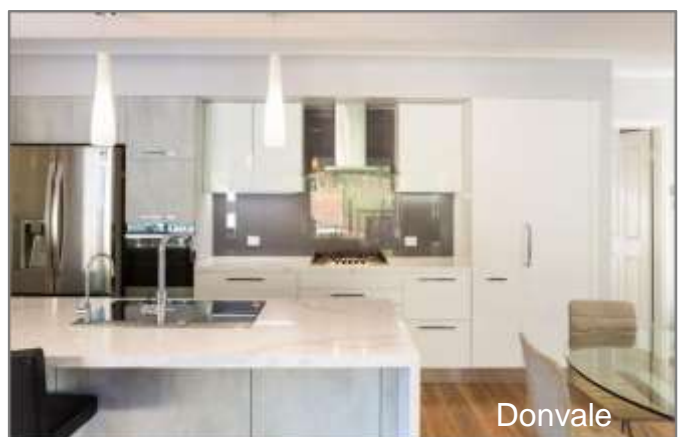
Mornington Peninsula



Albert Park



South Melbourne



Donvale



Wangaratta



Williamstown

...and many more